



Wednesday, September 29, 2004

## Release Notes

## SonicStudio HD

### Version 1.9.1

This document provides up-to-the-minute product information, additions and revisions to the SonicStudio HD documentation.

The 1.9.1 version incorporates a number of significant product enhancements. Many “under the hood” improvements have been made which will improve stability. Version 1.9 represented the largest rewrite of the HD application to date. Version 1.9.1 incorporates many product enhancements, repairs and improvements in functionality and stability, which extends the reliability and utility of SonicStudio HD.

#### ★ Important:

Beginning with this version, a new keying system will be used for SonicStudio HD which will allow us to add more options to the product over time. You will need to request a new key file in order to run this and future versions of SonicStudio HD. After we receive your request, a key file specific to your system will be created, and returned to you via e-mail. Please submit your requests to:

[support@sonicstudio.com](mailto:support@sonicstudio.com)

Please provide the following information and allow sufficient time for us to process your request:

- Your name
- Company name to which the product is registered
- E-mail address to which the key should be returned, if different from your sending address
- Sonic Studio system number or HDSP board number(s)

#### □ Resolved Issues & Major Fixes:

##### ➤ *CD Creation*

In general, the driver for CD writers has been extensively rewritten, and will result in far greater repeatability when writing discs.

- ✓ The driver for the Sony CDW-900E has been refined. Writes to the 900E are now done asynchronously, which fixes the long hold experienced at the end of CD writes. You will now regain control of the application at the end of the write process.
- ✓ PQ listings are more accurate due to improvements in the way Start and End of Track marks are rounded. Users will see better correlation between Timed

Tape dumps and CD, DDP and DDP image dumps. Also, PQ marks on loadback will more accurately reflect the original EDL.

In this version of HD, listings will reflect rounding to CD 75 frames for CD, DDP, DDP image, and Jam™ files. Listings will reflect rounding to SMPTE 30 frames for Timed Tape dumps. Also, the PQ listing track sub-total will now reflect track components correctly.

- ✓ Incorrect handling of PQ values has been fixed. The application now correctly rounds time to CD or SMPTE frames. This results in better correlation between Timed Tape dumps and CD, DDP and DDP image dumps. Also, PQ marks on loadback will more accurately reflect the original EDL.

In prior versions, when placing Start of Track marks very close to start of audio, with the offset preference set to zero, there was a possibility that the audio would be upcut due to required rounding to next CD frame. In this release, rounding has been changed to always round to an earlier time, eliminating the possibility of upcutting audio on playback. PQ mark positions will be more predictable.

Note that even though you can now place marks with greater precision, there are many older or low cost CD transports that cannot cue with perfect accuracy. You should always determine a start offset value that is appropriate for the target market segment and expectations.

- ✓ Miscellaneous flowthru fixes have been applied, making flowthru faster and more reliable.
  - A bug in CD delivery has been fixed.
  - A delivery timing issue with late model Plextor CD mechanisms, specifically firmware version 1.06 and newer, has been fixed.
  - Better circular audio buffer handling has been implemented for flowthru which, in turn, improves CD-R writing.

## ➤ *Desk*

- ✓ An issue with the Desk's mute state on play start when monitoring through HD in input mode has been fixed. The brief audio mute on play start has been addressed, and audio will not be interrupted once play begins.
- ✓ A bug in the meter's Peak Hold behavior has been fixed. The numeric peak hold will more accurately reflect the actual peak amplitude of the program. There was a condition in the 1.9 release where the highest peak could be missed by the numeric display.
- ✓ If you reduced the size of the Mixing Desk in 1.9 and then closed it, it would expand one extra track every time it was re-opened. This behavior has been resolved in 1.9.1.
- ✓ An issue with the Desk's filter grouping on application startup has been fixed. SonicStudio HD now sets the grouping across groups properly.
- ✓ Issues involving the channel 14/16 patching and the pan output assignment in 16 channel mode have been fixed.
- ✓ The double precision filter setting is now correctly saved in preferences and set on application restart.
- ✓ Some issues with the output meters not working correctly in 176.4 and 192

kHz mode has been repaired.

- ✓ Changes were made to the software to allow play and other commands to work properly with the Desk as foreground window.
- ✓ Several repairs were made to the polarity setting and panner to improve their operation.
- ✓ The Desk's output assignment pop-up has been improved. Patching errors reported in the 9-16 channel range have been fixed. This also fixes the dither breakage experienced if no plug-ins are applied to channels 9 and up. Note that even if all 16 channels are routed to plug-ins, no current plug-in processes the 9-16 channel range.
- ✓ An issue with the panner in 16 channel mode has been fixed. Previously, the surround + stereo panners were not able to assign stereo or LFE outputs to channels M9-16.

### ➤ *Audio I/O*

- ✓ In Audio I/O Preferences, the 1/2 wire pop-ups were reversed in the software's logic. Now it displays correctly in both the pop-ups and log window and sets up the I/O box correctly (HD3).

Also note that when operating in 88.2/96 kHz mode, there is a control in the Audio I/O Preferences to select 1 (single) wire or 2 (double) wire I/O mode. In earlier versions, this control was labeled 1x or 2x, different nomenclature from what is used on many converter products. We have changed this control to read "1 wire" and "2 wire" per AES stream. Please remember this labeling and select 2 wire mode if you require output at 176.4 or 192 kHz.

- ✓ A bug causing improper behavior of several of the I/O setting check boxes has been fixed.
- ✓ A fix was implemented to address reports of crashes when setting 2 wire mode.
- ✓ A long-standing bug in AES/EBU and S/PDIF channel status bits has been resolved. In previous versions, the output status bits were incorrect.

### ➤ *General*

- ✓ A random crash when closing Project windows, with more than one window open, has been resolved.
- ✓ In earlier beta versions, there was a bug that prevented use of POW-r dither. This has been resolved in this version.
- ✓ An inconsistency in computation of waveform rendering for in and out fades has been fixed.
- ✓ A problem with low level ticks in 30 second or longer fades in exported AIFF files as been resolved.

Please keep in mind that, for the highest quality work, you should use the native SonicStudio capture. Standard capture has full dither and DSP while using the SonicStudio Engine to create smooth fades.

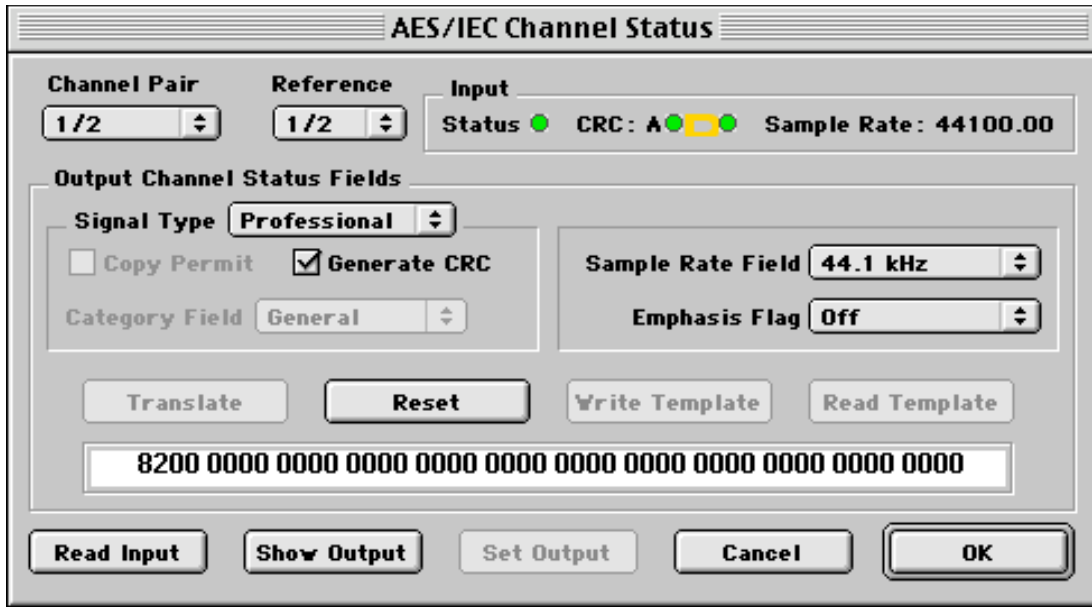
- ✓ With a Project open, crashes experienced when quitting the application or closing the Project have been fixed.
- ✓ The former 2 GB limit of file sizes, whereby both native recordings and large files exported from SonicStudio HD were segmented into multiple 1 GB files, has been fixed.
- ✓ A fix was made to the Open Soundfile command to address incorrect behavior when opening SD2 and WAV files.
- ✓ A problem that caused waveforms built from 24 bit, non-native files to be out of sync has been resolved.
- ✓ A random crash when deleting cues in the Transport Panel has been resolved.
- ✓ A change has been made so that invalid values can no longer be entered into the Ramp Up Time field of the LTC time code reader preferences.
- ✓ A problem where the user was unable to click on other windows or controls after a modal dialog appeared has been fixed.
- ✓ An issue with board keying and serial numbers has been fixed which now allows both HDSP and DSD systems to coexist in the same computer.
- ✓ A problem that caused crashes when setting 192 kHz mode has been fixed.
- ✓ The "D2" machine type can now be used to create timed tapes on P2-compliant decks.

## ❑ **New Features:**

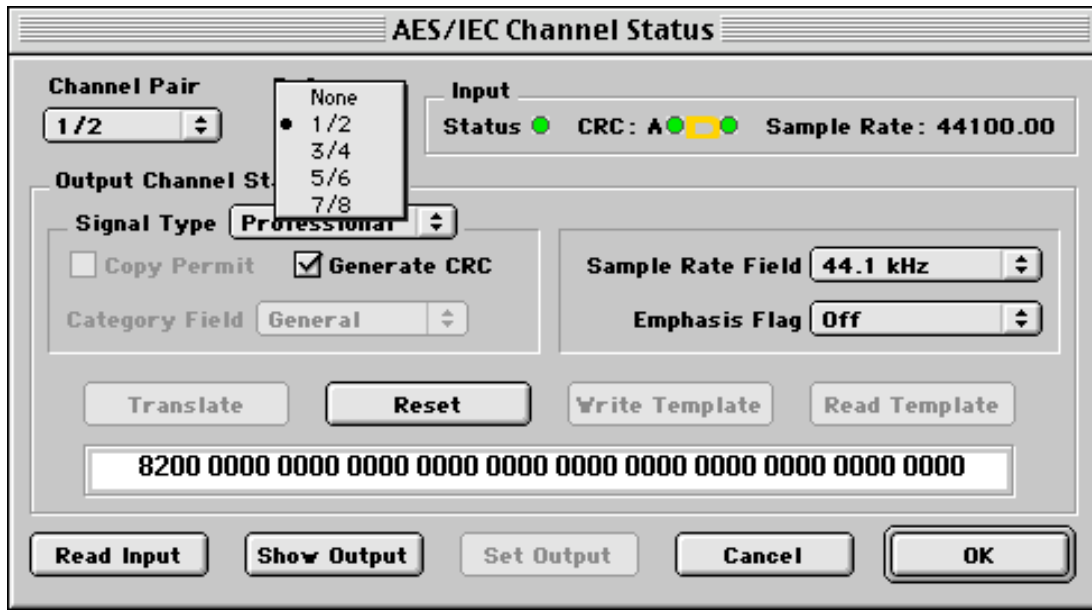
### ➤ *Audio I/O*

#### *AES/EBU Dialog*

A new "Reference" pop-up has been added, which allows the user to force the status bits of any given channel pair to mirror the channel status of this global setting. This feature saves time when setting more than one output pair.



If any settings shown on-screen differ from the current hardware setting for that channel pair, the “Set Output” button will become active. Note that this pop-up setting is saved in the Preference file, forcing the application to start up according to the last saved state. Note that this is a global setting for the box, even though it appears in the AES/IEC Channel Status dialog.



➤ *Editing*

1) *New Shortcut*

A shortcut, the *end* key, has been added for the View > Zoom To Out Point command.

2) *Edit Fade Mode*

You can now engage auto-zoom in EFM. Simply press the “a” key to engage or disengage the Autozoom function. Repeated presses of the key will cause the

checkbox for this mode to change state.



➤ *General*

1) *Transport Control*

A toggle button and selector pop-up has been added to the Transport Control window. When the toggle button is engaged, the inputs selected via the adjacent pop-up will be routed to outputs M1 and M2. This feature was added to give the user a fast method of monitoring external tapes while cueing.



Please note that the toggle should be turned off or deselected before returning to normal monitoring and editing.

2) *Metering*

The metering code has been optimized to display smoother metering than in past versions.

❑ **Known Issues:**

1) *Reduce File Names*

We tested a method of generating file names for waveform “reduce” files, in beta versions of 1.9, which could create file names incompatible with earlier versions of SonicStudio HD. In this release, we have reverted to the original naming system. You may need to rebuild waveform files for Projects that were built in 1.9.1 beta versions.

2) *Polarity Invert*

The Polarity Invert button in the Mixing Desk is not yet fully functional.



- 3) *RT DeNoise*  
In the RT DN window, you cannot enter parameter settings via the numeric fields. You must use the slider controls.
- 4) *Loop & Fill*  
When you use loop and fill function, it may not completely fill the area defined in the destination EDL. You may need to manually edit in the last copy of fill material if the remaining area is shorter than the selection in the source panel.
- 5) *1630 PQ Mark Shift*  
If your Project contains audio before the first track mark, then you may get a shift in PQ mark position. You should move the first in fade to a point at or after the first Start mark. Please note that a related issue was already fixed when writing to CD.
- 6) *Multiple EDLs Within a Project*  
If you import an EDL into a Project, the imported EDL will retain its source/destination status. This means that you can end up with more than one source or destination EDLs in your Project. Remember to first set a newly imported EDL to "none" (N), then select either source or destination if required, before executing any edits.

## **Tech Notes:**

- 1) *Key Installation*  
Once again, please note that SonicStudio HD version 1.9.1 and later requires a new key file. You will be e-mailed a new key after your request is processed. Keys for this and future versions will be named "SonicStudioHD Key." As there is no conflict between the current and previous key formats, keys for prior versions, named "Sonic Key" and "Sonic\_2 Key," can be kept together in the Sonic Preferences folder. See the introduction to this document for further information about receiving your new key file.
- 2) *Disk Maintenance*  
Modern, high speed hard disks found on most SonicStudio HD systems are capable of providing very reliable service day in and day out. The inherently high transfer and access speeds of these drives can, however, mask impending problems. SonicStudio HD users are constantly writing and erasing large files from our drives, which will lead to file fragmentation and allocation problems. Improvements in disk access buffering in version 1.9.1 has greatly reduced problems with audio looping. Generally, when looping occurs in recording, playback or CD writing, it's an indication that disk maintenance is required.  
  
Engineers should have disk repair utilities available as part of their maintenance tool kit. Norton Speed Disk and Alsoft Plus Optimizer are both good options for routine disk defragmentation. One word of warning; if you do a full installation of Norton Utilities on your host computer, you should disable the operation of Norton's File Saver option. See Norton's accompanying documentation for instructions on disabling this function.
- 3) *Memory*  
We have observed that the Apple Macintosh 1.25 and 1 GHz machines can be unstable when mismatched memory modules are installed. It is highly recommended that, if your machine has more than one RAM module installed, that all modules be of identical speed and manufacturer. With a proper memory installation, the 1 and 1.25 GHz machines are very good performers when hosting SonicStudio HD.
- 4) *Preferences*  
The Sonic preferences file in your System Folder is updated whenever you close the Preferences window. If you amend your Sonic preference settings, but experience an application or system crash while the Preferences window is open,

you should double check your preference settings after re-launching the application. We also highly recommend throwing away your system preferences file when switching from prior versions of SonicStudio HD.

- 5) *New Soundfile Parameters*  
Settings in the New Soundfile Parameters window are saved when you quit the application. If there is an application or system crash, you should confirm your New Soundfile Parameters settings after you re-launch SonicStudio HD.
- 6) *Autosonic & Java*  
The installer for version 1.9.1 will check the Java libraries in your System Folder. If the installer detects an older version of MRJ Symantec JITC and the associated libraries in your Extension folder, it will update these extensions to version 2.2.5. Updating these files has improved stability of Autosonic on many installations.