

# Model 302

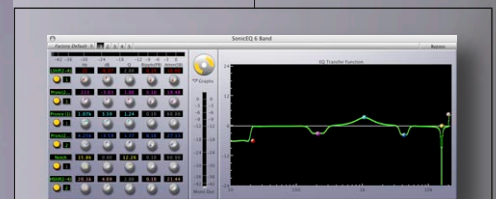
2 Channel DSP I/O Processor  
from Sonic Studio

## Celebrated workflow, Unquestioned fidelity

The Model 302 DSP I/O processor is the ideal compliment to soundBlade, multiplying its power, fidelity and flexibility. With superior signal paths, the Model 302 works with all OS X audio applications so you are free from hardware lock-in. Its true strength lies, however, in its intimate connection to our peerless production application, soundBlade, and the NoNOISE II restoration suite. Increase your productivity with our streamlined workflow while improving your quality with the Model 302 from Sonic Studio.



- **Enhances the operation of Sonic Studio's software**  
Purpose-built to run Sonic Studio's soundBlade, studioX & NoNOISE II
- **Patching Flexibility in Both Software & Hardware**  
Comprehensive control of signal flow plus analog & digital loop through to external gear
- **Extended Precision Signal Pathways**  
Superior sonics for all your work, in keeping with Sonic Studio's heritage
- **Includes Graphing Version of Sonic Studio's Exclusive Minimal Phase EQ**  
Full parametrics, shelves, bandpass/stop, notch + RIAA de-emphasis
- **Low Latency Monitoring & Processing**  
Perfect for location recordings & live performance
- **High Quality Conversion**  
Colorless capture & playback of analog & digital material
- **Exceptional Embedded Processing**  
On-board DSP allows the host CPU to get on with other work
- **Chainable Isochronous FireWire Interface**  
Increase channel count & DSP power without losing versatility
- **Provision for Outboard & Headphone Monitoring**  
Record in confidence regardless of surroundings
- **High Quality Clock Master**  
Low jitter provides pinpoint imaging & solid low end
- **Lightweight, Portable & Bus Powered**  
Take your rig wherever you're needed



Sonic Studio's minimal phase EQ, part of a Model 302

Model 302 2 Channel DSP I/O Processor

 **Sonic Studio**

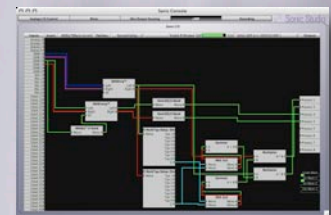
Trust the transparency

## Speeds & Feeds:

2 balanced analog inputs, 1/4" TRS & XLR  
2 balanced analog outputs, 1/4" TRS, switchable -10 or +4 dBu  
2 balanced analog monitor outputs, 1/4" TRS  
2 channels of high gain, low noise preamplification w/ switchable phantom power  
Stereo balanced analog send & return, 1/4" TRS  
Headphone output, 1/4" TRS  
24 bit A/D converters, 110 dB dynamic range  
24 bit D/A converters, 120 dB dynamic range  
44.1, 48, 88.2, 96 kHz sampling rates  
Full 24 bit/96 kHz audio I/O  
Word clock I/O, 1x or 256x on BNC  
Stereo digital input, AES/EBU or S/PDIF selectable  
Defeatable asynchronous sample rate conversion on input  
Stereo digital output, simultaneous AES/EBU & S/PDIF  
4 simultaneous inputs, 6 simultaneous outputs  
Dual FireWire 400 (IEEE 1394a) host connectors —  
    bus, mains or battery powered  
Autonomous operation — No host needed  
    global scene memory slots for 10 preset configurations  
Acts as a standard Core Audio I/O for all Mac OS X applications  
2 x ADSP-21065 + 1 x ADSP-21364 SHARC DSP complement  
Rack mount kit hardware included  
Fully portable



soundBlade, enhanced with a Model 302



**Stereo**



## Mic Input Specifications:

Gain Range with Trim	-14 dB to +70 dB
Harmonic Distortion @ 1 kHz (+9 dBu in @ 6 dB Gain)	0.0005%
Intermodulation Distortion (1 kHz component, 19 kHz/20 kHz @ +8 dBu)	-96 dBu
Equivalent Input Noise, 20 Hz–20 kHz Flat @ 72 dB Gain, 150 Ω Source	-130.5 dBu
Equivalent Input Noise, 20 Hz–20 kHz Flat @ 72 dB Gain, 0 Ω Source	-134.0 dBu
Frequency Response, 18 Hz–20 kHz	± 0.1 dB
Frequency Response, 3 Hz–100 kHz	± 3.0 dB
Crosstalk @ 1 kHz, trim link engaged	-107 dB



[www.sonicstudio.com](http://www.sonicstudio.com)

Sonic Studio  
1560-1 Newbury Road, #272  
Newbury Park CA 91320-3448  
415-460-1201, 775-330-8923 fax

© 2006 Sonic Studio, LLC  
Specification subject to change without notice.  
Sonic Studio, the Sonic Studio logo, NoNOISE II, Sonic Console, Series 300, Model 302 and FreeFlight are trademarks of Sonic Studio, LLC. All other company and product names are trademarks of their respective owners.

All right reserved  
060501r2v1